

DOUBLE SLIDE RAIL

750er series

SLIDE RAIL PLATES

| Plate length L | Plate height H | Thickness t _{pl} | Pipe clearance L _c | System length L _s | Permissible earth pressure [kN/m ²] | Limit state design load e _d / Characteristic system resistance R _k [kN/m ²] | Weight [kg] |
|-------------------|-------------------|------------------------------|----------------------------------|------------------------------------|--|--|------------------|
| [m] | [m] | [mm] | [m] | [m] | [kN/m ²] | [kN/m ²] | [kg] |
| 2.00 | 2.40 1.40 | 107.00 | 1.80 | 2.27 | 158.2 | 237.3 | 550.0 355.0 |
| 2.50 | 2.40 1.40 | | 2.30 | 2.77 | 101.2 | 151.8 | 650.0 420.0 |
| 3.00 | 2.40 1.40 | | 2.80 | 3.27 | 70.3 | 105.5 | 770.0 495.0 |
| 3.50 | 2.40 1.40 | | 3.30 | 3.77 | 51.6 | 77.4 | 900.0 580.0 |
| 4.00 | 2.40 1.40 | | 3.80 | 4.27 | 39.5 | 59.3 | 1010.0 650.0 |
| 4.00 | 2.40 1.40 | 130.00 | 3.80 | 4.27 | 82.1 | 123.2 | 1370.0 880.0 |
| 4.50 | 2.40 1.40 | | 4.30 | 4.77 | 64.9 | 97.4 | 1530.0 980.0 |
| 5.00 | 2.40 1.40 | | 4.80 | 5.27 | 52.6 | 78.9 | 1690.0 1070.0 |
| 5.50 | 2.40 1.40 | | 5.30 | 5.77 | 43.4 | 65.1 | 1850.0 1170.0 |
| 6.00 | 2.40 1.40 | | 5.80 | 6.27 | 36.5 | 54.8 | 2210.0 1370.0 |

Other lengths or custom variants upon request.

DOUBLE SLIDE RAIL

| Description | Rail lengths L _T | Weight per support | Rail height b _T = type | Permissible bending moment |
|-------------------------------|--------------------------------|--------------------------|--------------------------------------|----------------------------------|
| | [m] | [kg] | [mm] | [kNm] |
| Standard – 750 series | 4.50 | 960.0 | 375.00 | 672.0 |
| Standard – 750 series | 5.50 | 1170.0 | | |
| Top rail – 750 series | 3.00 | 650.0 | 405.00 | 927.0 |
| Mega – 750 series | 6.50 | 1710.0 | | |
| Mega – 750 series | 7.50 | 2000.0 | | |
| Mega top rail – 750 series | 3.00 | 760.0 | | |

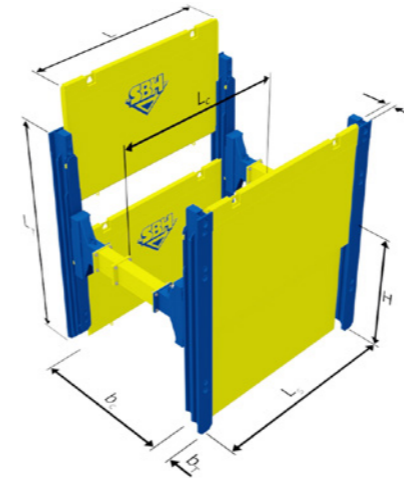
CORNER DOUBLE SLIDE RAILS

| Description | Rail length L _T | Weight per support | Rail height b _T | Permissible bending moment |
|---------------------------------|-------------------------------|--------------------------|-------------------------------|----------------------------------|
| | [m] | [kg] | [mm] | [kNm] |
| Standard – 750 series | 4.50 | 810.0 | 430.00 | 328.0 |
| Standard – 750 series | 5.50 | 950.0 | | |
| Standard – 750 series | 6.50 | 1130.0 | | |
| Standard – 750 series | 7.50 | 1305.0 | | |
| Corner top rail – 750 series | 3.00 | 530.0 | | |

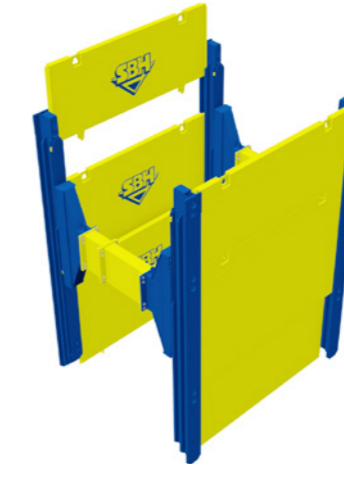
The double slide rails in the 750 series are used for deep trenches with high pipe clearances and in environments where there is the risk of subsidence. Different slide rails can be used, which enables a wide range of applications.

- ▶ Easy installation and removal thanks to offset guide levels
- ▶ Greater depths as a result of two guide levels
- ▶ High flexibility thanks to different slide rails
- ▶ Using corner rails, plates can be connected all around the corners to form a pit.

DOUBLE SLIDE RAIL MINI
750 SERIES



DOUBLE SLIDE RAIL STANDARD
750 SERIES



DOUBLE SLIDE RAIL MEGA
750 SERIES



ROLLING STRUTS (RS)

| Description | RS length L _{RS} [m] | RS width b _{RS} [m] | Min working width b _c [m] | Flange b _F x h _F [mm] | Permissible forces [kN] | Weight per RS pair [kg] |
|-----------------|-------------------------------------|------------------------------------|--|---|-------------------------------|-------------------------------|
| Mini – RS | 1.24 | 0.62 | 1.24 | 405.00 x 420.00 | -100.0 bis 639.0 | 620.0 |
| Standard – RS | 2.04 | 0.62 | 1.00 / 1.24 | 405.00 x 720.00 | -200.0 bis 780.0 | 980.0 |
| Mega – RS | 3.04 | 0.92 | 1.83 | 405.00 x 1220.00 | -374.0 bis 973.0 | 1700.0 |
| RS for top rail | 1.24 | 0.62 | 1.00 / 1.24 | 405.00 x 420.00 | -100.0 bis 639.0 | 620.0 |

DISTANCE PIECES

| Length L _Z [m] | Mini/RS for top rail | | Standard – RS | | Mega – RS | |
|------------------------------|----------------------|----------------|-----------------|----------------|------------------|----------------|
| | Flange [mm] | Weight [kg] | Flange [mm] | Weight [kg] | Flange [mm] | Weight [kg] |
| 0.25 | 405.00 x 420.00 | 99.0 | 405.00 x 720.00 | 163.0 | 405.00 x 1220.00 | 306.0 |
| 0.50 | | 128.0 | | 201.0 | | 363.0 |
| 0.75 | | 157.0 | | 239.0 | | 418.0 |
| 1.00 | 405.00 x 420.00 | 185.0 | 405.00 x 720.00 | 277.0 | 405.00 x 1220.00 | 474.0 |
| 2.00 | | 303.0 | | 437.0 | | 714.0 |
| 3.00 | | 421.0 | | 597.0 | | 960.0 |



ACCESSORIES

You can find the accessory parts

- ▶ Assembly helps
- ▶ Protection rail
- ▶ Lowering help
- ▶ Clamping device
- ▶ Spanner

for the Double Slide Rail 750 series on pages 88–91.