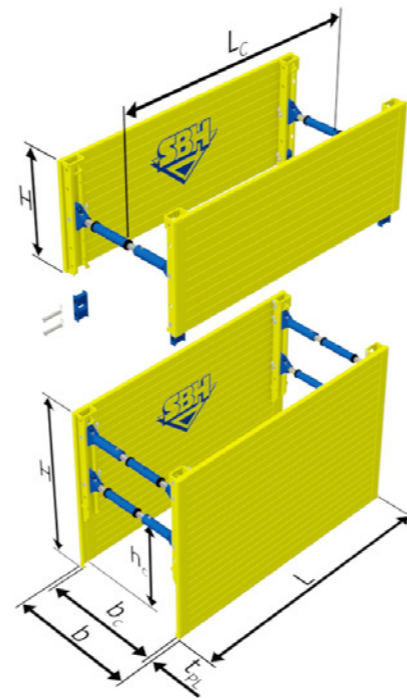


LIGHT BOX 300 series

The SBH Light Box combines lightweight plates construction with an articulated spindle. This type of shoring is therefore ideal for small to medium-sized trenches and the use of light construction machinery.

- ▶ The Light Box can also be used in unstable soils
- ▶ Thanks to its articulated spindles, it can also be installed using the cut and lower method
- ▶ Ideal for supply lines and house connections
- ▶ Compared with the Lightweight Shoring system, a more robust side part construction enables higher pipe clearances, and the SBH spindles with extension pipes enable greater trench widths



PLATES $t_{pl} = 60.00 \text{ mm}$

| Plate length L [m] | Plate height H [m] | Pipe clearance length L_c [m] | Pipe clearance height h_c [m] | Permissible length pressure [kN/m ²] | Limit state design load e_d / Characteristic system resistance R_k [kN/m ²] | Weight per box [kg] |
|--------------------|--------------------|---------------------------------|---------------------------------|--|---|---------------------|
| 2.00 | 2.00 | 1.60 | 1.12 | 50.4 | 75.6 | 920.0 |
| | 2.40 | | 1.27 | 38.5 | 57.8 | 1030.0 |
| | 2.60 | | 1.27 | 38.2 | 57.3 | 1105.0 |
| | 1.40 | | | 50.4 | 75.6 | 640.0 |
| 2.50 | 2.00 | 2.10 | 1.12 | 32.7 | 49.1 | 1025.0 |
| | 2.40 | | 1.27 | 30.8 | 46.2 | 1150.0 |
| | 2.60 | | 1.27 | 30.6 | 45.9 | 1240.0 |
| | 1.40 | | | 32.7 | 49.1 | 720.0 |
| 3.00 | 2.00 | 2.60 | 1.12 | 31.8 | 47.7 | 1385.0 |
| | 2.40 | | 1.27 | 26.0 | 39.0 | 1575.0 |
| | 2.60 | | 1.27 | 25.8 | 38.7 | 1700.0 |
| | 1.40 | | | 31.8 | 47.7 | 960.0 |
| 3.50 | 2.00 | 3.10 | 1.12 | 22.7 | 34.1 | 1535.0 |
| | 2.40 | | 1.27 | 22.3 | 33.5 | 1750.0 |
| | 2.60 | | 1.27 | 22.1 | 33.2 | 1890.0 |
| | 1.40 | | | 22.7 | 34.1 | 1070.0 |

Other lengths or custom variants upon request.



ACCESSORIES

You can find the accessory parts

- ▶ Spindle key
- ▶ Spindle adaptor
- ▶ Protection rail
- ▶ 4-fold chain with shortening system
- ▶ Box connectors
- ▶ Protective driving cap

for the Light Box 300 series on pages 88–91.